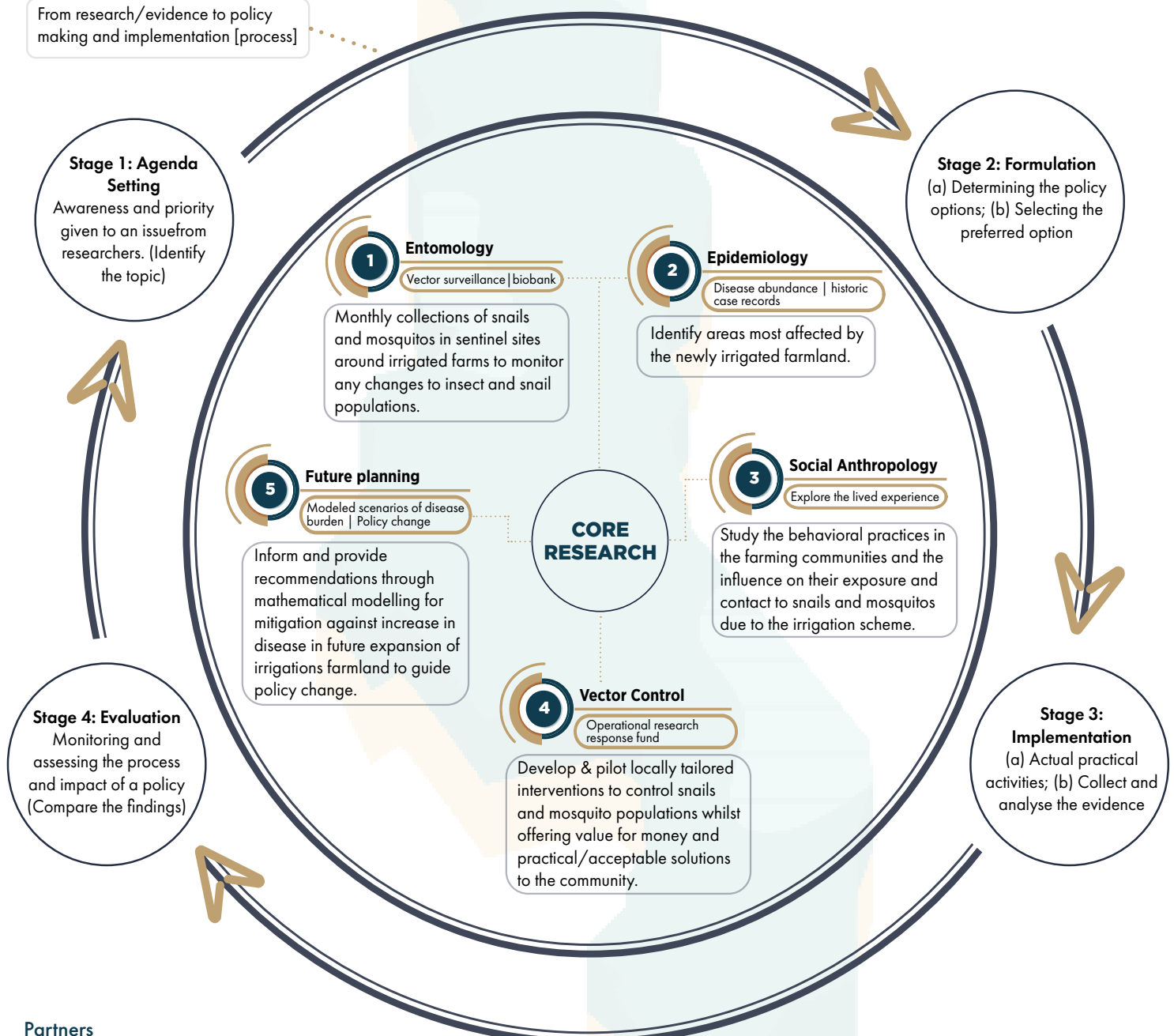


ABOUT

The Shire Valley Vector Control Project (Shire-Vec) is a research collaboration that will investigate vector borne diseases (VBDs) in emerging agricultural systems in Malawi. Communities within the Shire Valley Transformative Project (SVTP) area are the primary beneficiaries.

From research/evidence to policy making and implementation [process]



Partners

- Malawi-Liverpool-Wellcome Clinical Research Programme (MLW)
- MAC - Communicable Diseases Action Centre (MAC-CDAC)
- Kamuzu University of Health Sciences (KUHeS)
- African Institute for Development Policy (AFIDEP)
- Liverpool School of Tropical Medicine (LSTM)



FUNDED BY
NIHR | National Institute for Health and Care Research

This project is funded by the National Institute for Health Research (NIHR) [NIHR Global Health Research Group on Controlling Vector Borne Diseases in Emerging Agricultural Systems in Malawi (NIHR133144)/NIHR Evaluation, Trials and Studies Coordinating Centre (NETSCC)]. The views expressed are those of the author(s) and not necessarily those of the NIHR or the Department of Health and Social Care.

For more information:

- www.lstmd.ac.uk/shire-vec
- malawivector@gmail.com
- [@malawivector](https://twitter.com/malawivector)